

CINEMA

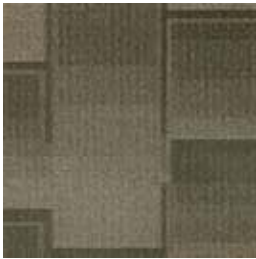




CONSTRUCTION	VLOC
PILE FIBER COMPOSITION	100% Nylon (Polyamide 6)
YARN TYPE	BCF
DYE METHOD	Solution Dyed
PILE WEIGHT	750 g/m <sup>2</sup>
NUMBER OF TUFTS	232260/m <sup>2</sup>
TUFTING GAUGE	1/12"
PRIMARY BACKING	Non-Woven
SECONDARY BACKING	<b>StableShield</b> - 100% Vinyl
OPTIONAL BACKING	<b>Recova</b> -PU Cushion, <b>EcoShield</b> -100% Recycled Vinyl
TILE SIZE	50 cm x 50 cm
PILE HEIGHT	3.5 mm / 5.0 mm
TOTAL PILE HEIGHT	7.0 mm
PILE TREATMENT	INVISTA Anti-Soil Treatment, Anti-Microbial (Optional)
RECOMMENDED INSTALLATION	Quarter Turn or Monolithic

# SPECIFICATIONS

# COLOURLINE



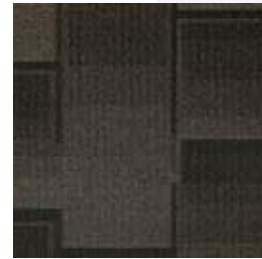
CINEMA-740



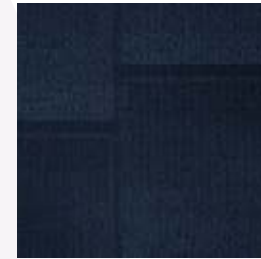
CINEMA-741



CINEMA-744



CINEMA-749



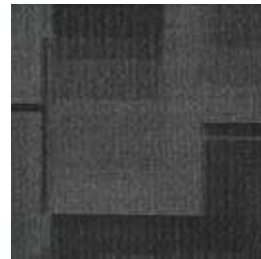
CINEMA-757



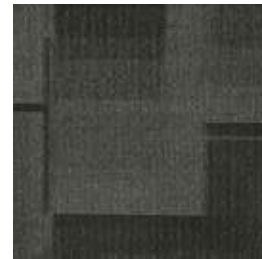
CINEMA-759



CINEMA-770



CINEMA-773



CINEMA-774

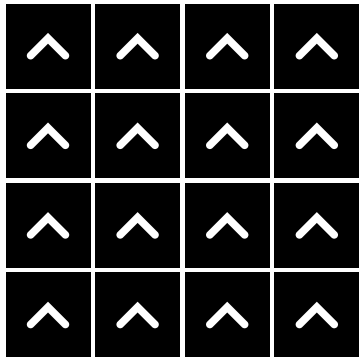


CINEMA-778

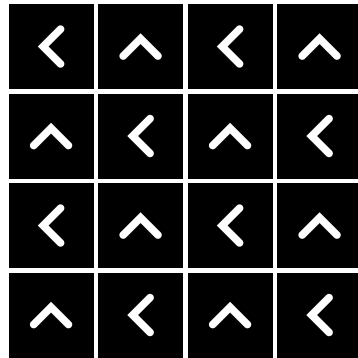


# HOW TO INSTALL

**MONOLITHIC**



**QUARTER TURN**





Standard  
*CARPETS*

[www.standardcarpets.com](http://www.standardcarpets.com)